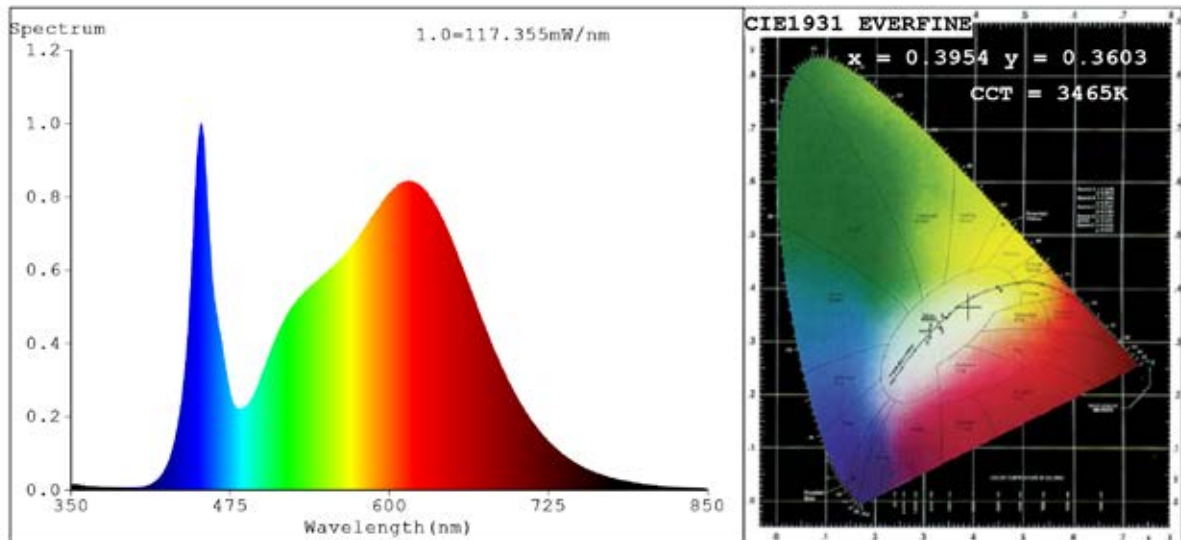


## Spectrum Test Report



### Color Parameters:

Chromaticity Coordinate:  $x=0.3954$   $y=0.3603$   $u'=0.2421$   $v'=0.4964$   
 CCT=3465K (Duv=-0.0117) Dominant WL:Ld =588.3nm Purity=26.8%  
 Ratio:R=22.7% G=73.8% B=3.6%;;Peak WL:Lp=452.2nm FWHM=20.1nm  
 Render Index:Ra=92.9 CRI=90.6 TM30:Rf=86 Rg=105  
 R1 =96 R2 =97 R3 =95 R4 =92 R5 =95 R6 =93 R7 =90  
 R8 =85 R9 =69 R10=92 R11=91 R12=78 R13=97 R14=97 R15=96

### Photo Parameters:

Flux = 5279 lm Eff. : 128.32 lm/W Fe = 18.90 W

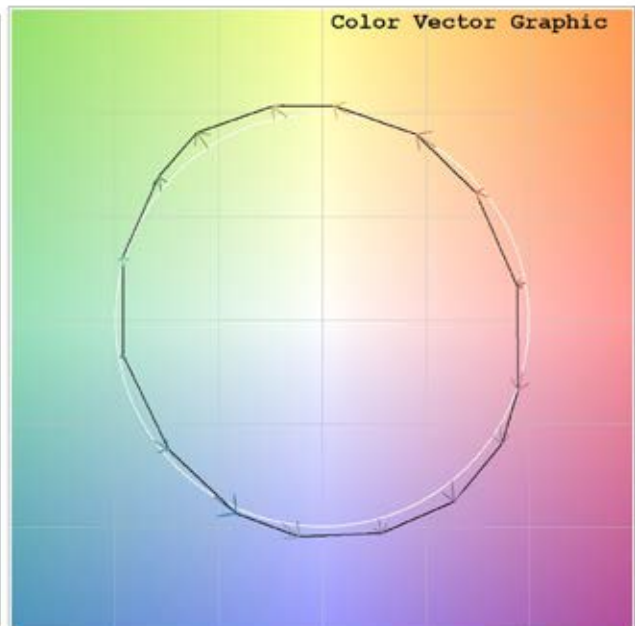
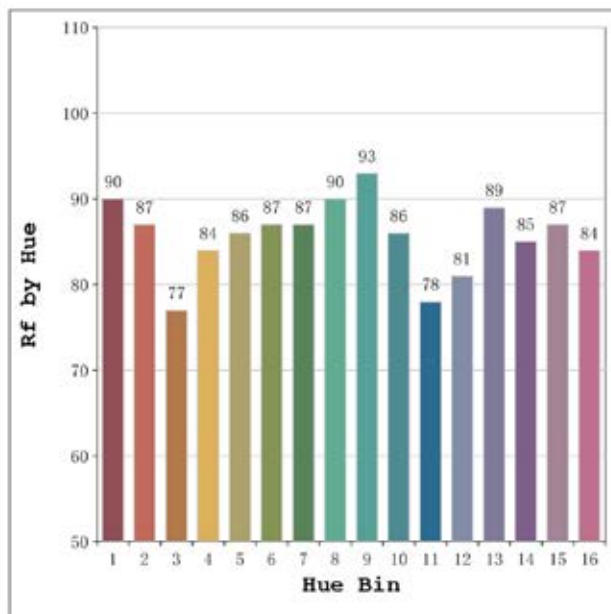
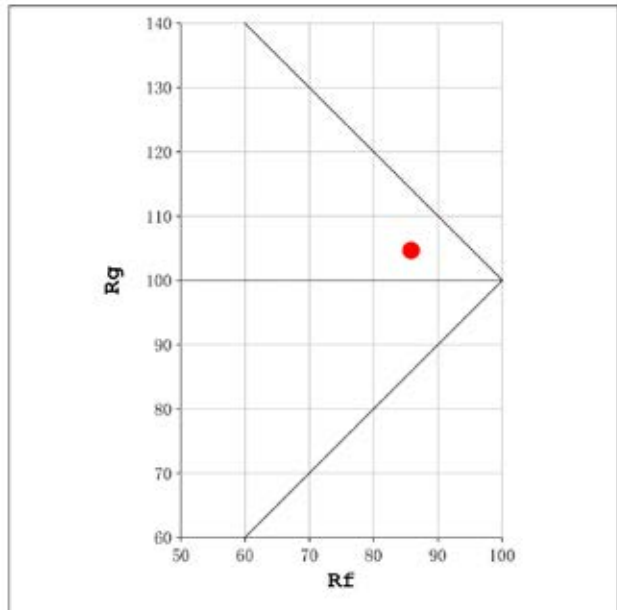
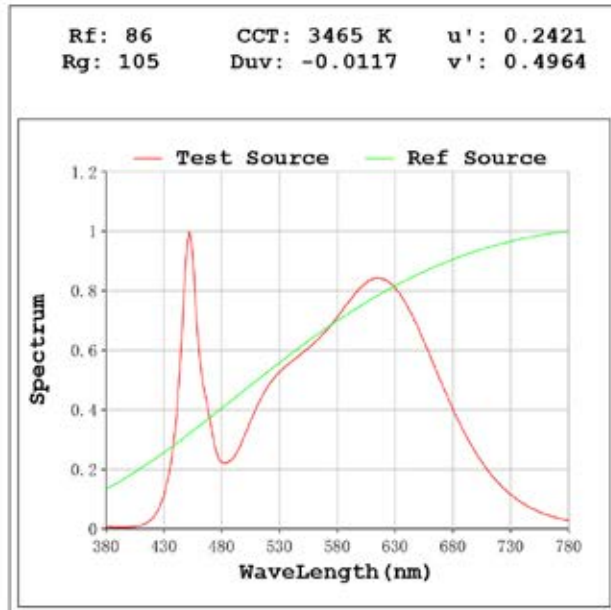
### Electrical parameters:

V = 23.998 V I = 1.714 A P = 41.14 W PF = 1.000

Status: Integral T = 190 ms Ip = 36138 (55%)

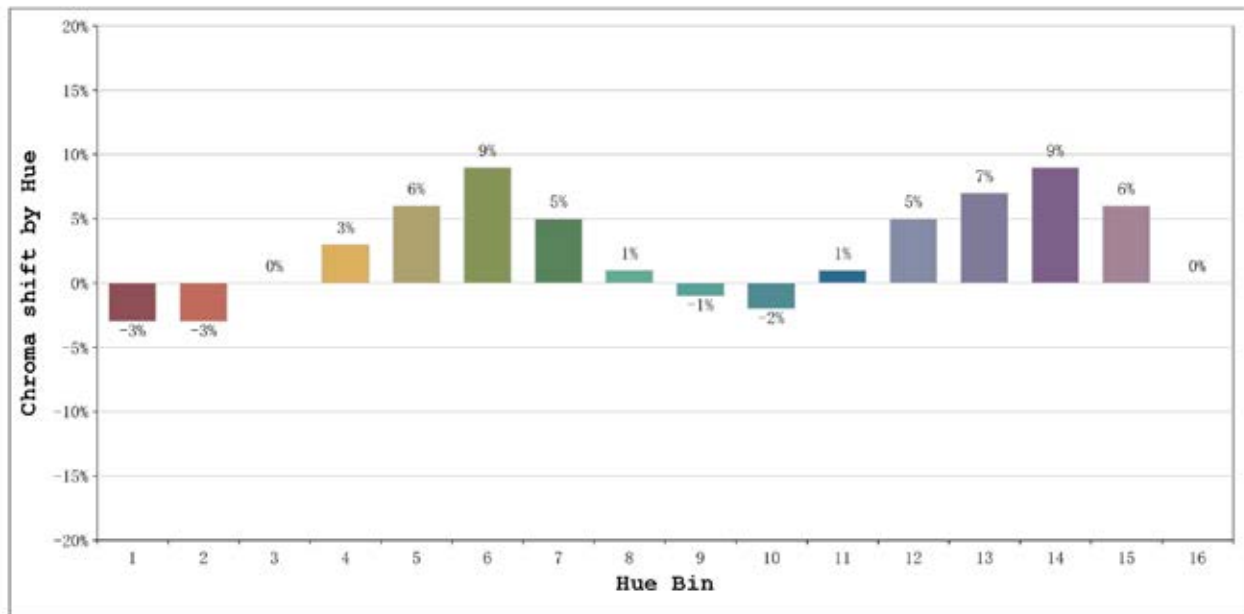
Model:Blanes (CW+WW)  
 Tester:Sergio Carneros  
 Temperature:25Deg  
 Manufacturer:Luz Negra

Number: 33.330  
 Date:2025-05-22 15:54:02  
 Humidity:40%  
 Remarks:100cm de tira flexible



Model:Blanes (CW+WW)  
 Tester:Sergio Carneros  
 Temperature:25Deg  
 Manufacturer:Luz Negra

Number: 33.330  
 Date:2025-05-22 15:54:02  
 Humidity:40%  
 Remarks:100cm de tira flexible

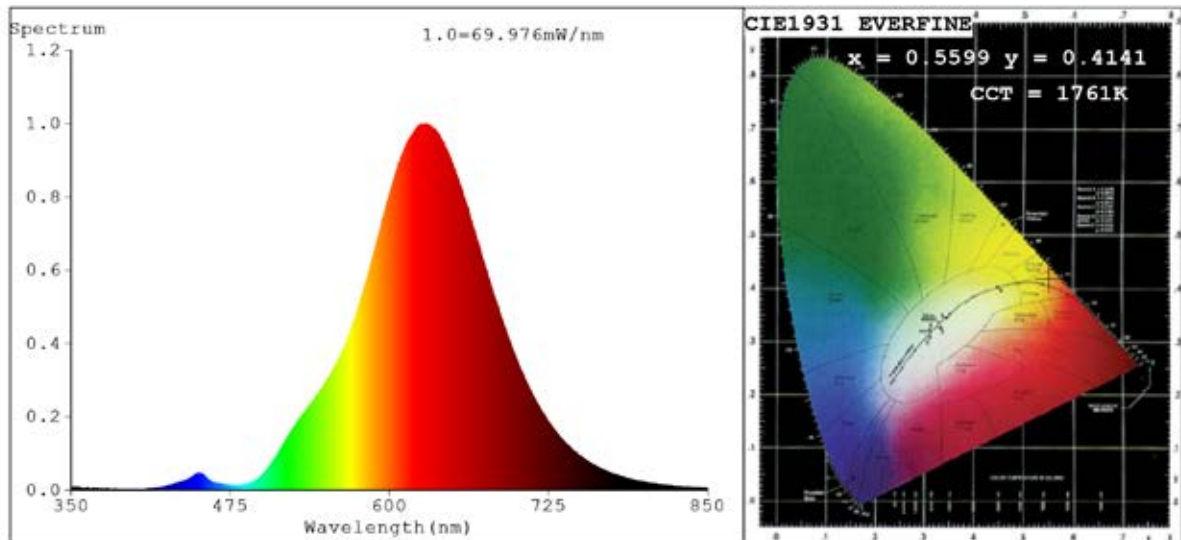


|         |                 |    | Graphic shift(%) |     |
|---------|-----------------|----|------------------|-----|
| Hue Bin | Hue Angle       | Rf | Chroma           | Hue |
| 1       | 0.0° - 22.5°    | 90 | -3               | 0   |
| 2       | 22.5° - 45.0°   | 87 | -3               | 5   |
| 3       | 45.0° - 67.5°   | 77 | 0                | 11  |
| 4       | 67.5° - 90.0°   | 84 | 3                | 9   |
| 5       | 90.0° - 112.5°  | 86 | 6                | 6   |
| 6       | 112.5° - 135.0° | 87 | 9                | 0   |
| 7       | 135.0° - 157.5° | 87 | 5                | -4  |
| 8       | 157.5° - 180.0° | 90 | 1                | -4  |
| 9       | 180.0° - 202.5° | 93 | -1               | 0   |
| 10      | 202.5° - 225.0° | 86 | -2               | 7   |
| 11      | 225.0° - 247.5° | 78 | 1                | 13  |
| 12      | 247.5° - 270.0° | 81 | 5                | 9   |
| 13      | 270.0° - 292.5° | 89 | 7                | 1   |
| 14      | 292.5° - 315.0° | 85 | 9                | -3  |
| 15      | 315.0° - 337.5° | 87 | 6                | -5  |
| 16      | 337.5° - 360.0° | 84 | 0                | -9  |

Model:Blanes (CW+WW)  
Tester:Sergio Carneros  
Temperature:25Deg  
Manufacturer:Luz Negra

Number: 33.330  
Date:2025-05-22 15:54:02  
Humidity:40%  
Remarks:100cm de tira flexible

## Spectrum Test Report



### Color Parameters:

Chromaticity Coordinate:  $x=0.5599$   $y=0.4141$   $u'=0.3270$   $v'=0.5441$   
 CCT=1761K (Duv=0.0024) Dominant WL:Ld =590.6nm Purity=92.4%  
 Ratio:R=37.7% G=62.0% B=0.3%;;Peak WL:Lp=628.9nm FWHM=109.2nm  
 Render Index:Ra=81.3 CRI=76.2 TM30:Rf=80 Rg=88  
 R1 =79 R2 =89 R3 =98 R4 =77 R5 =77 R6 =87 R7 =83  
 R8 =59 R9 =20 R10=75 R11=75 R12=69 R13=81 R14=97 R15=73

### Photo Parameters:

Flux = 2184 lm Eff. : 102.16 lm/W Fe = 8.885 W

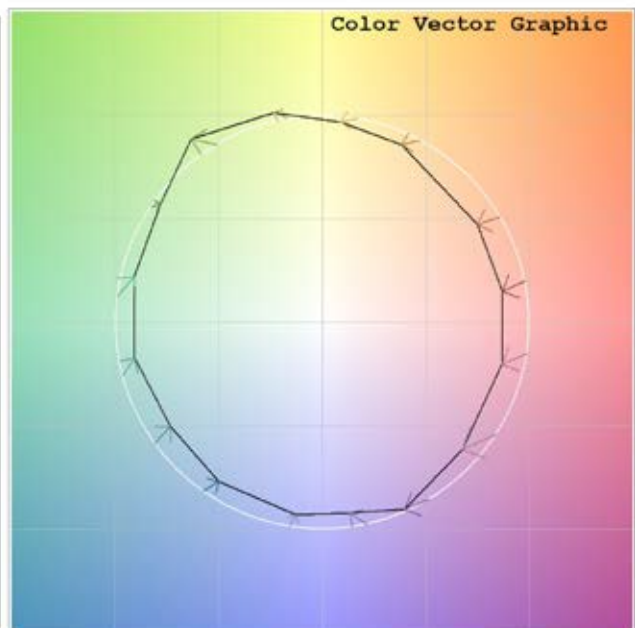
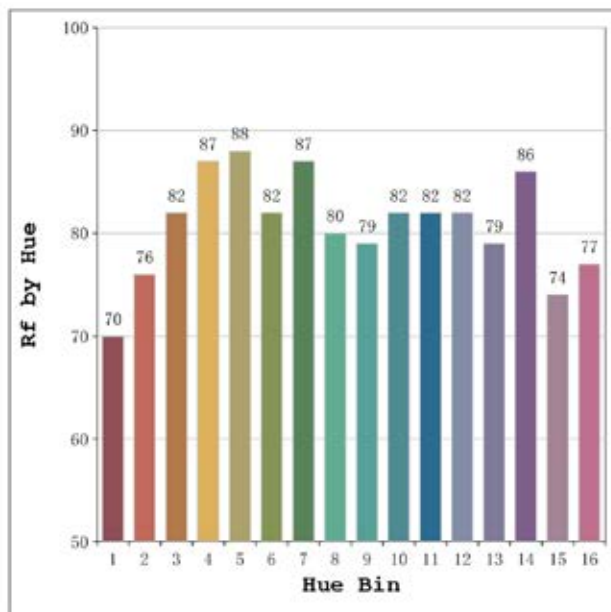
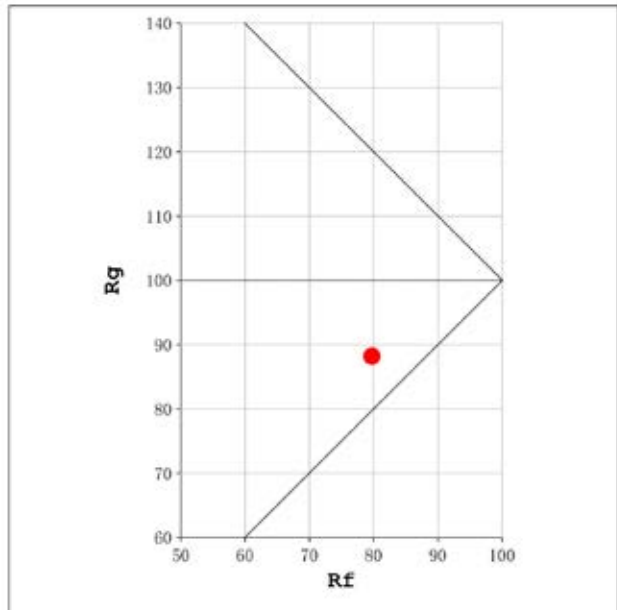
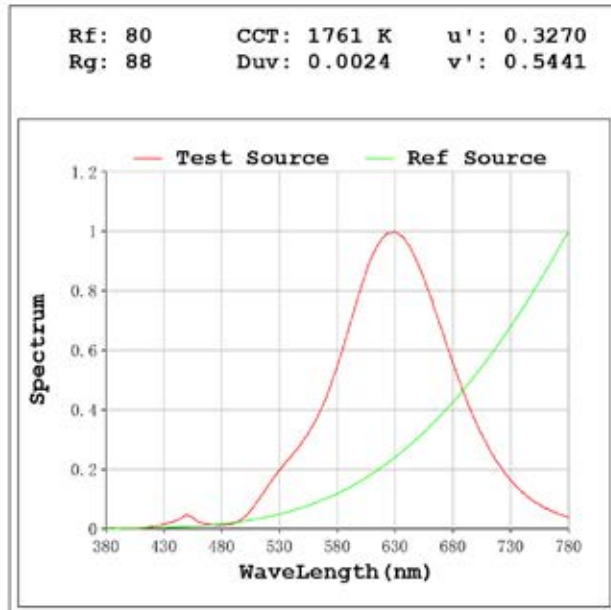
### Electrical parameters:

V = 23.998 V I = 0.8908 A P = 21.38 W PF = 1.000

Status: Integral T = 408 ms Ip = 51085 (78%)

Model:Blanes (WW)  
 Tester:Sergio Carneros  
 Temperature:25Deg  
 Manufacturer:Luz Negra

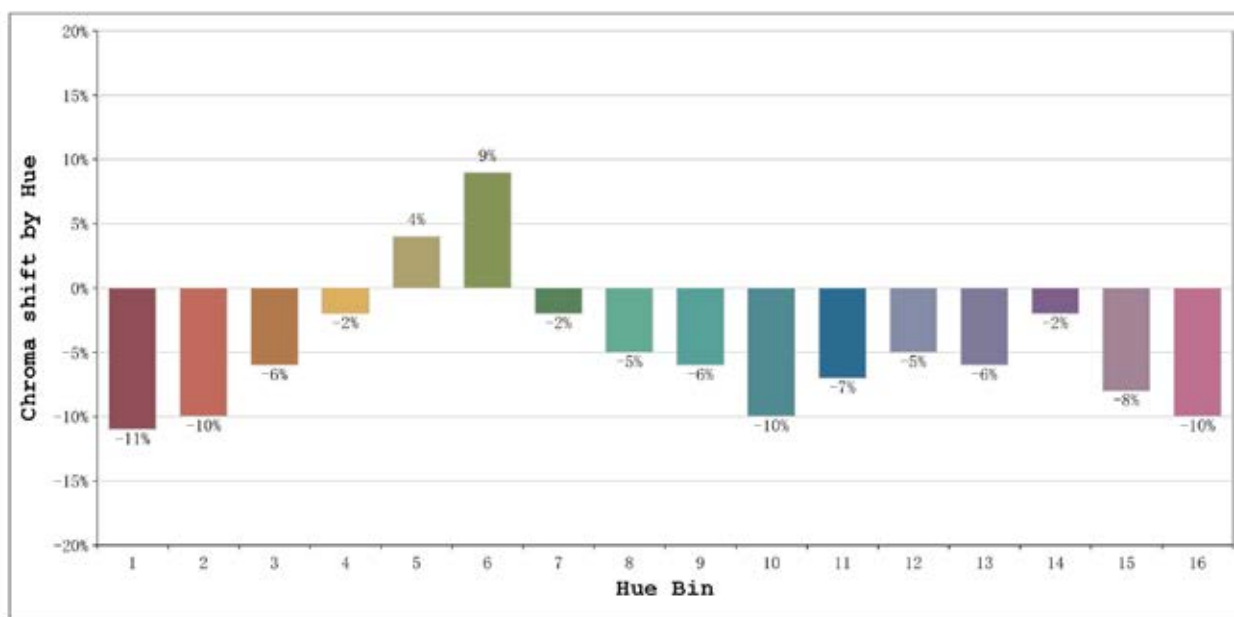
Number: 33.330  
 Date:2025-05-22 15:55:09  
 Humidity:40%  
 Remarks:100cm de tira flexible



Model:Blanes (WW)  
 Tester:Sergio Carneros  
 Temperature:25Deg  
 Manufacturer:Luz Negra

Number: 33.330  
 Date:2025-05-22 15:55:09  
 Humidity:40%  
 Remarks:100cm de tira flexible



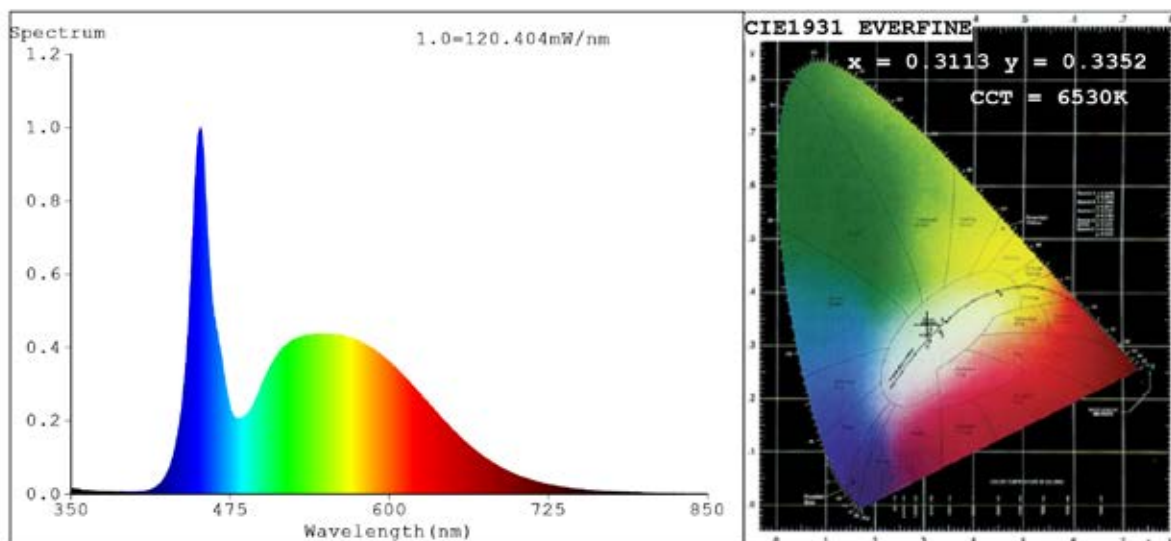


|         |                 |    | Graphic shift(%) |     |
|---------|-----------------|----|------------------|-----|
| Hue Bin | Hue Angle       | Rf | Chroma           | Hue |
| 1       | 0.0° - 22.5°    | 70 | -11              | -2  |
| 2       | 22.5° - 45.0°   | 76 | -10              | 3   |
| 3       | 45.0° - 67.5°   | 82 | -6               | 6   |
| 4       | 67.5° - 90.0°   | 87 | -2               | 8   |
| 5       | 90.0° - 112.5°  | 88 | 4                | 6   |
| 6       | 112.5° - 135.0° | 82 | 9                | 9   |
| 7       | 135.0° - 157.5° | 87 | -2               | -3  |
| 8       | 157.5° - 180.0° | 80 | -5               | -10 |
| 9       | 180.0° - 202.5° | 79 | -6               | -6  |
| 10      | 202.5° - 225.0° | 82 | -10              | -2  |
| 11      | 225.0° - 247.5° | 82 | -7               | 4   |
| 12      | 247.5° - 270.0° | 82 | -5               | 2   |
| 13      | 270.0° - 292.5° | 79 | -6               | -6  |
| 14      | 292.5° - 315.0° | 86 | -2               | -11 |
| 15      | 315.0° - 337.5° | 74 | -8               | -14 |
| 16      | 337.5° - 360.0° | 77 | -10              | -6  |

Model:Blanes (WW)  
 Tester:Sergio Carneros  
 Temperature:25Deg  
 Manufacturer:Luz Negra

Number: 33.330  
 Date:2025-05-22 15:55:09  
 Humidity:40%  
 Remarks:100cm de tira flexible

## Spectrum Test Report



### Color Parameters:

Chromaticity Coordinate:  $x=0.3113$   $y=0.3352$   $u'=0.1946$   $v'=0.4714$   
 CCT=6530K(Duv=0.0070) Dominant WL:Ld =492.8nm Purity=7.3%  
 Ratio:R=12.9% G=81.6% B=5.4%;;Peak WL:Lp=451.2nm FWHM=18.9nm  
 Render Index:Ra=82.0 CRI=74.0 TM30:Rf=81 Rg=93  
 R1 =79 R2 =86 R3 =90 R4 =81 R5 =80 R6 =81 R7 =89  
 R8 =70 R9 =5 R10=67 R11=80 R12=53 R13=81 R14=95 R15=75

### Photo Parameters:

Flux = 3367 lm Eff. : 161.55 lm/W Fe = 10.91 W

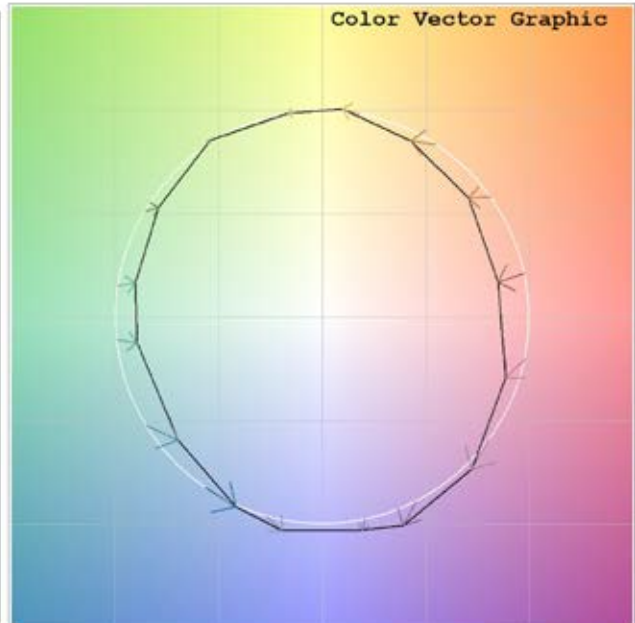
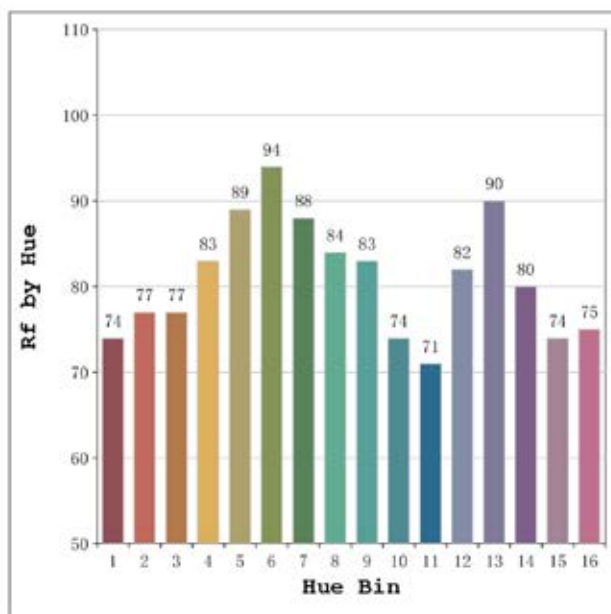
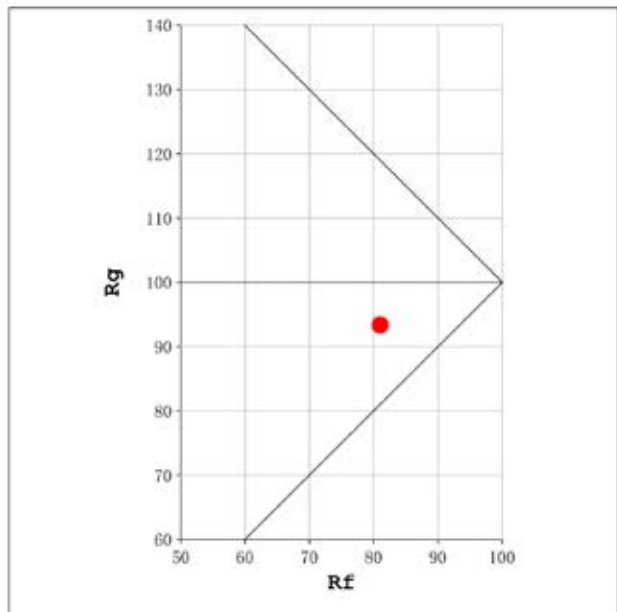
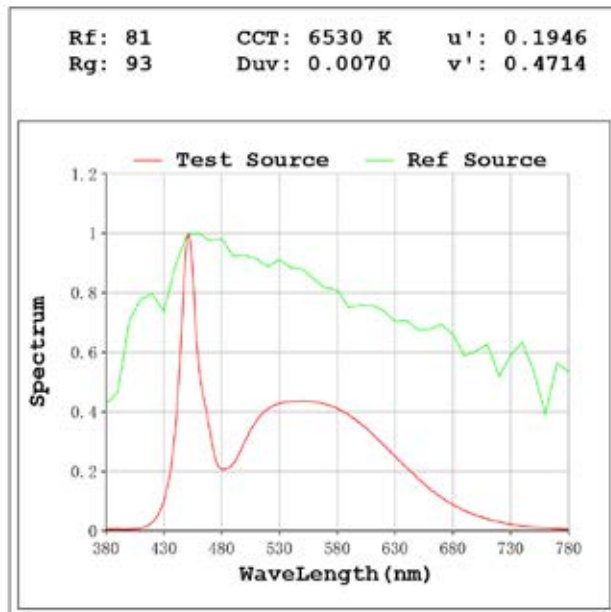
### Electrical parameters:

V = 23.998 V I = 0.8684 A P = 20.84 W PF = 1.000

Status: Integral T = 325 ms Ip = 50043 (76%)

Model:Blanes (CW)  
 Tester:Sergio Carneros  
 Temperature:25Deg  
 Manufacturer:Luz Negra

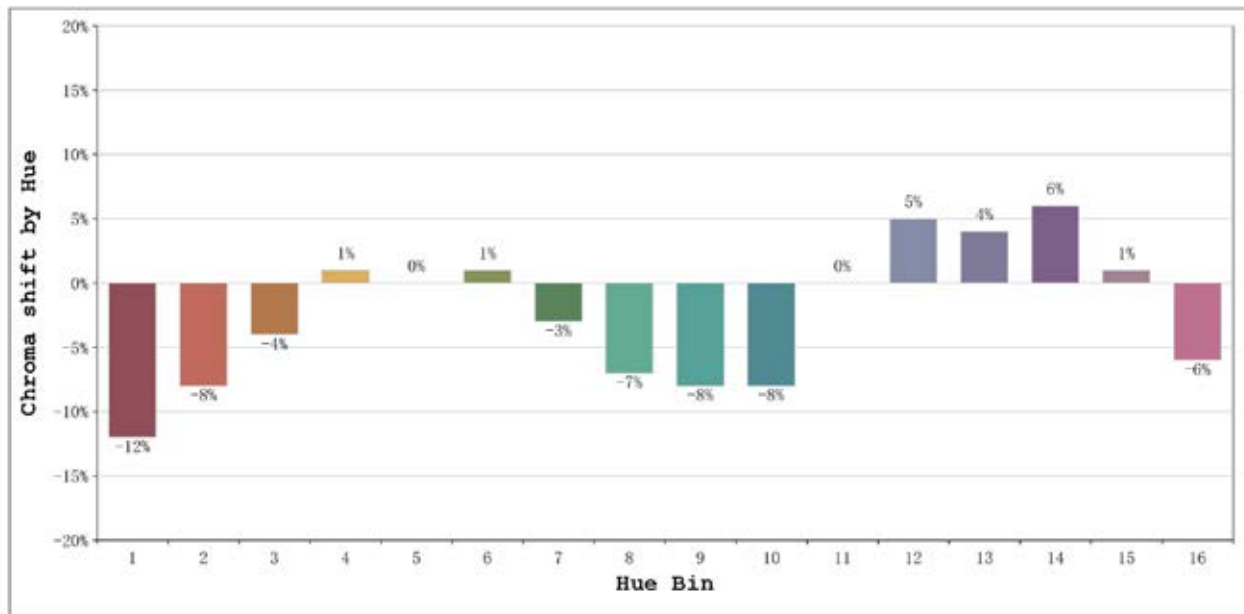
Number: 33.330  
 Date:2025-05-22 15:55:53  
 Humidity:40%  
 Remarks:100cm de tira flexible



Model:Blanes (CW)  
 Tester:Sergio Carneros  
 Temperature:25Deg  
 Manufacturer:Luz Negra

Number: 33.330  
 Date:2025-05-22 15:55:53  
 Humidity:40%  
 Remarks:100cm de tira flexible





|         |                 |    | Graphic shift(%) |     |
|---------|-----------------|----|------------------|-----|
| Hue Bin | Hue Angle       | Rf | Chroma           | Hue |
| 1       | 0.0° - 22.5°    | 74 | -12              | -1  |
| 2       | 22.5° - 45.0°   | 77 | -8               | 5   |
| 3       | 45.0° - 67.5°   | 77 | -4               | 11  |
| 4       | 67.5° - 90.0°   | 83 | 1                | 9   |
| 5       | 90.0° - 112.5°  | 89 | 0                | 3   |
| 6       | 112.5° - 135.0° | 94 | 1                | -1  |
| 7       | 135.0° - 157.5° | 88 | -3               | -4  |
| 8       | 157.5° - 180.0° | 84 | -7               | -2  |
| 9       | 180.0° - 202.5° | 83 | -8               | 3   |
| 10      | 202.5° - 225.0° | 74 | -8               | 14  |
| 11      | 225.0° - 247.5° | 71 | 0                | 18  |
| 12      | 247.5° - 270.0° | 82 | 5                | 9   |
| 13      | 270.0° - 292.5° | 90 | 4                | -1  |
| 14      | 292.5° - 315.0° | 80 | 6                | -11 |
| 15      | 315.0° - 337.5° | 74 | 1                | -15 |
| 16      | 337.5° - 360.0° | 75 | -6               | -9  |

Model:Blanes (CW)  
Tester:Sergio Carneros  
Temperature:25Deg  
Manufacturer:Luz Negra

Number: 33.330  
Date:2025-05-22 15:55:53  
Humidity:40%  
Remarks:100cm de tira flexible